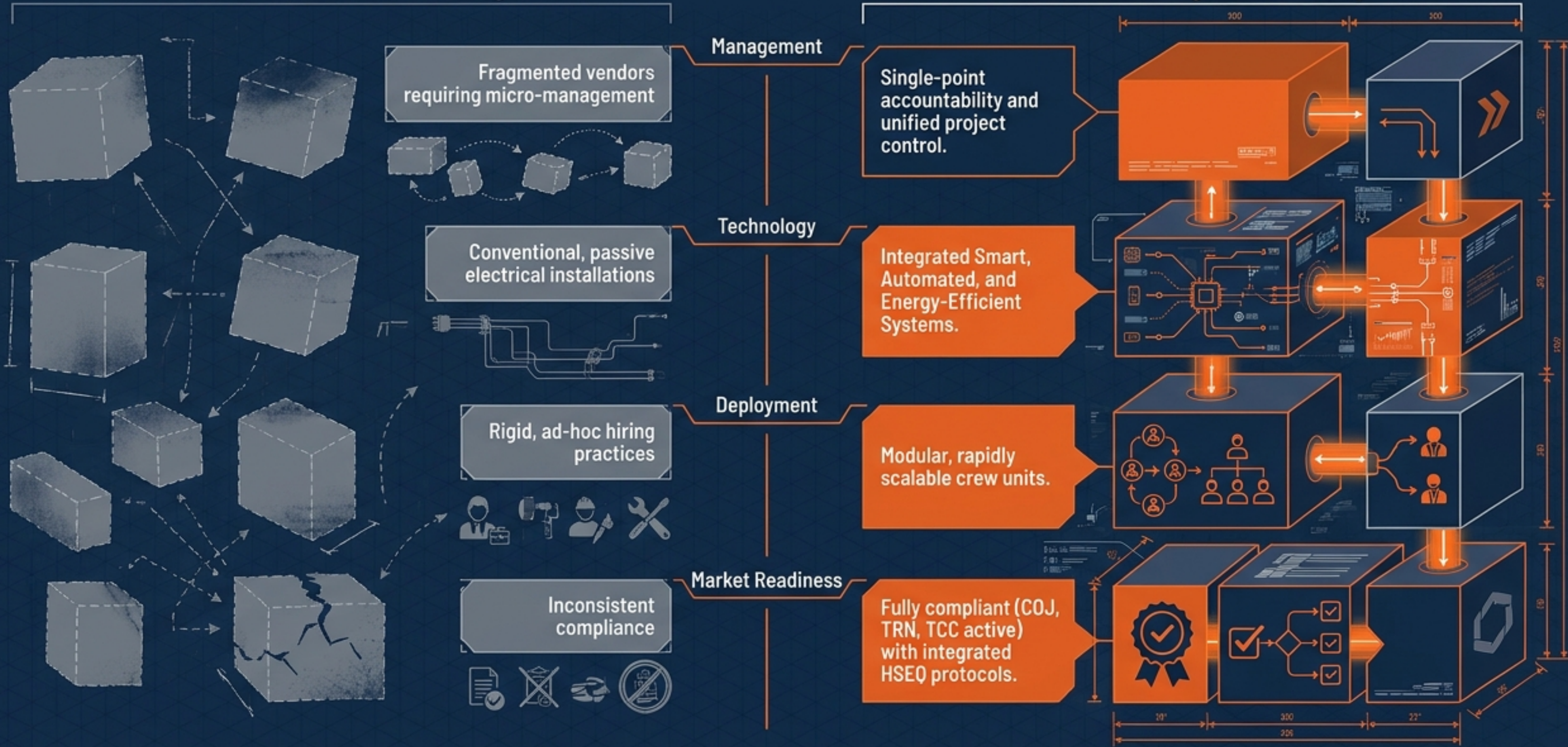


Evolving Beyond Fragmented Sub-Contracting



Traditional Sub-Contracting

SSACOL Strategic Partnership



Bridging Heavy Infrastructure and Smart Automation



We provide primary contractors with a comprehensive sub-contracting solution that de-risks execution and elevates the final build.

Technical Specialization:

Elite engineering in both civil/marine works and automated HVAC/electrical systems.

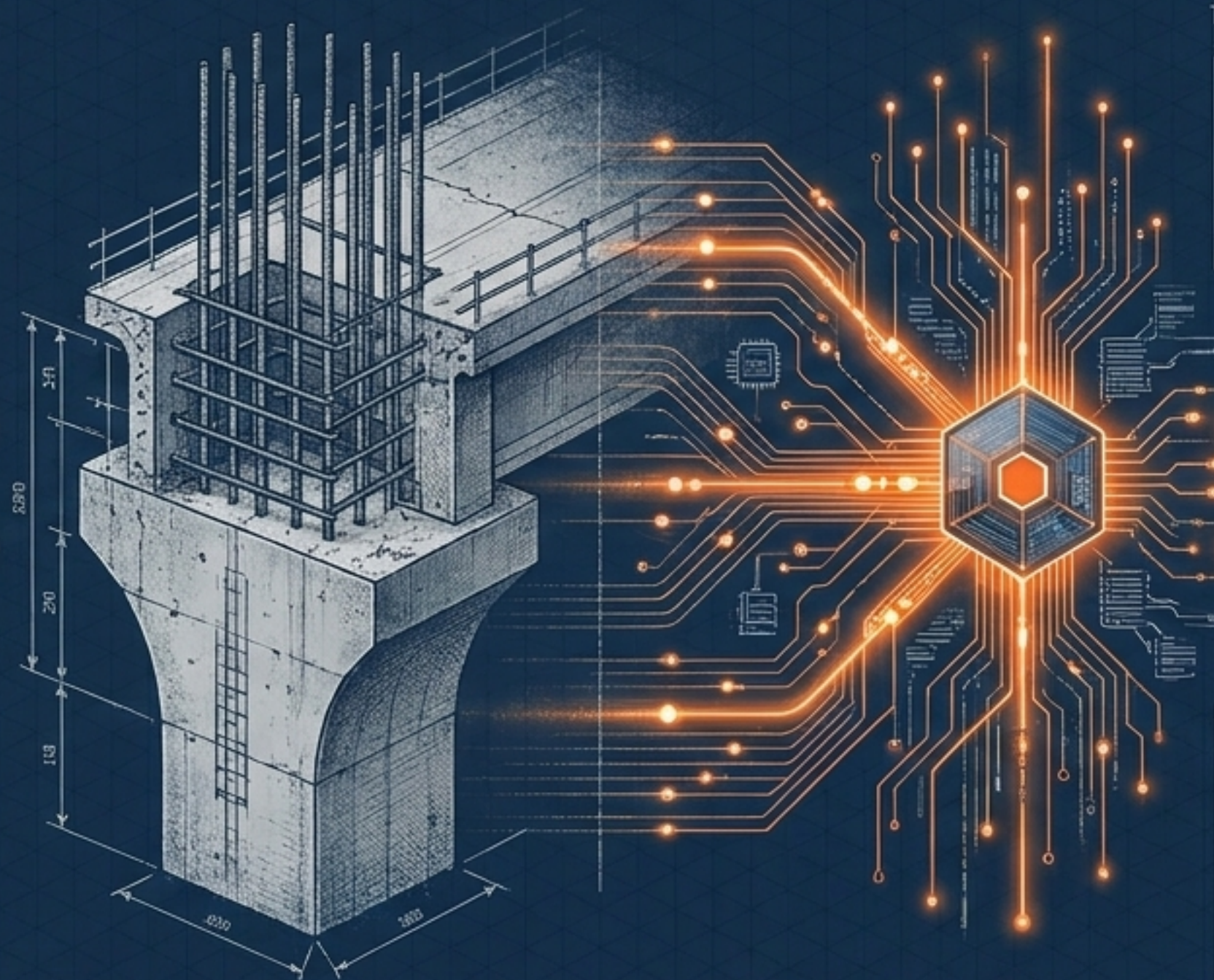
HSEQ Excellence: Strict, unyielding adherence to safety protocols, quality standards, and environmental responsibility.

Scalable Flexibility:

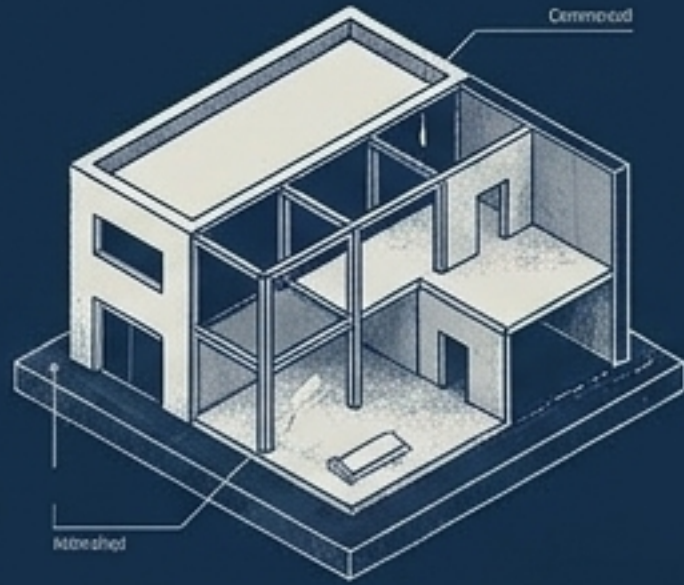
Modular workforce structured to adapt instantly to fluctuating project scales.

Lifecycle Support:

Sustained involvement from the initial budgeting phase through final delivery and long-term maintenance.

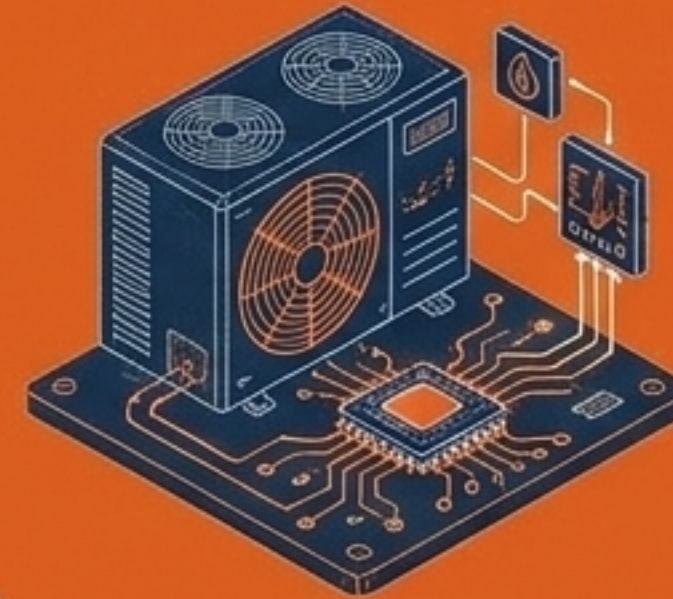


The Four Pillars of Integrated Capability



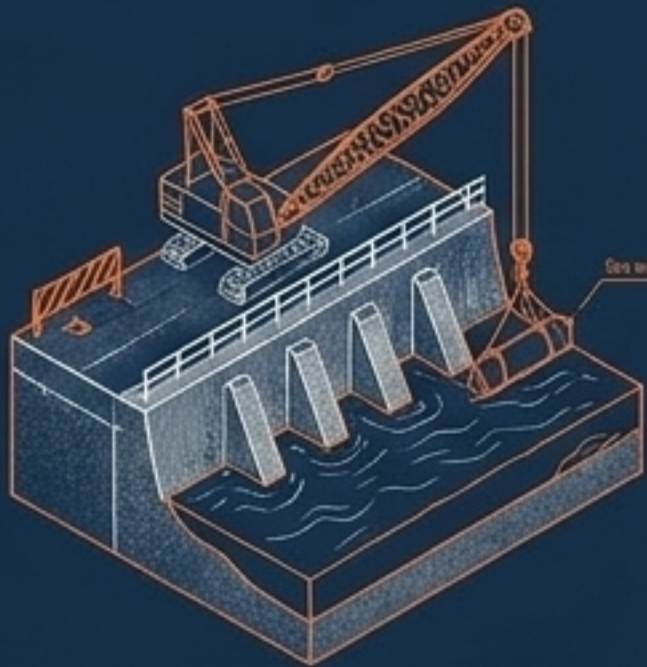
Building & Interior Construction.

Precision engineering for commercial and residential shells and finishes.



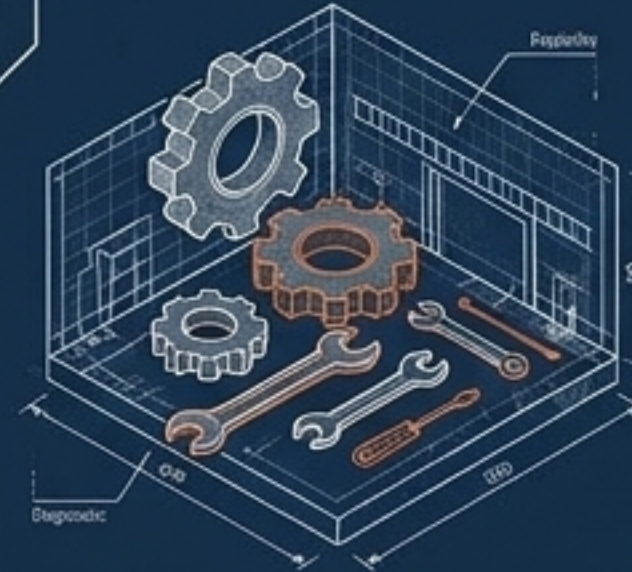
Electrical & MEP Systems.

The 'Smart' integration: advanced HVAC, automation, and electrical grids.



Marine & Coastal Engineering.

Specialized heavy infrastructure for dynamic marine environments.



Industrial & Building Maintenance.

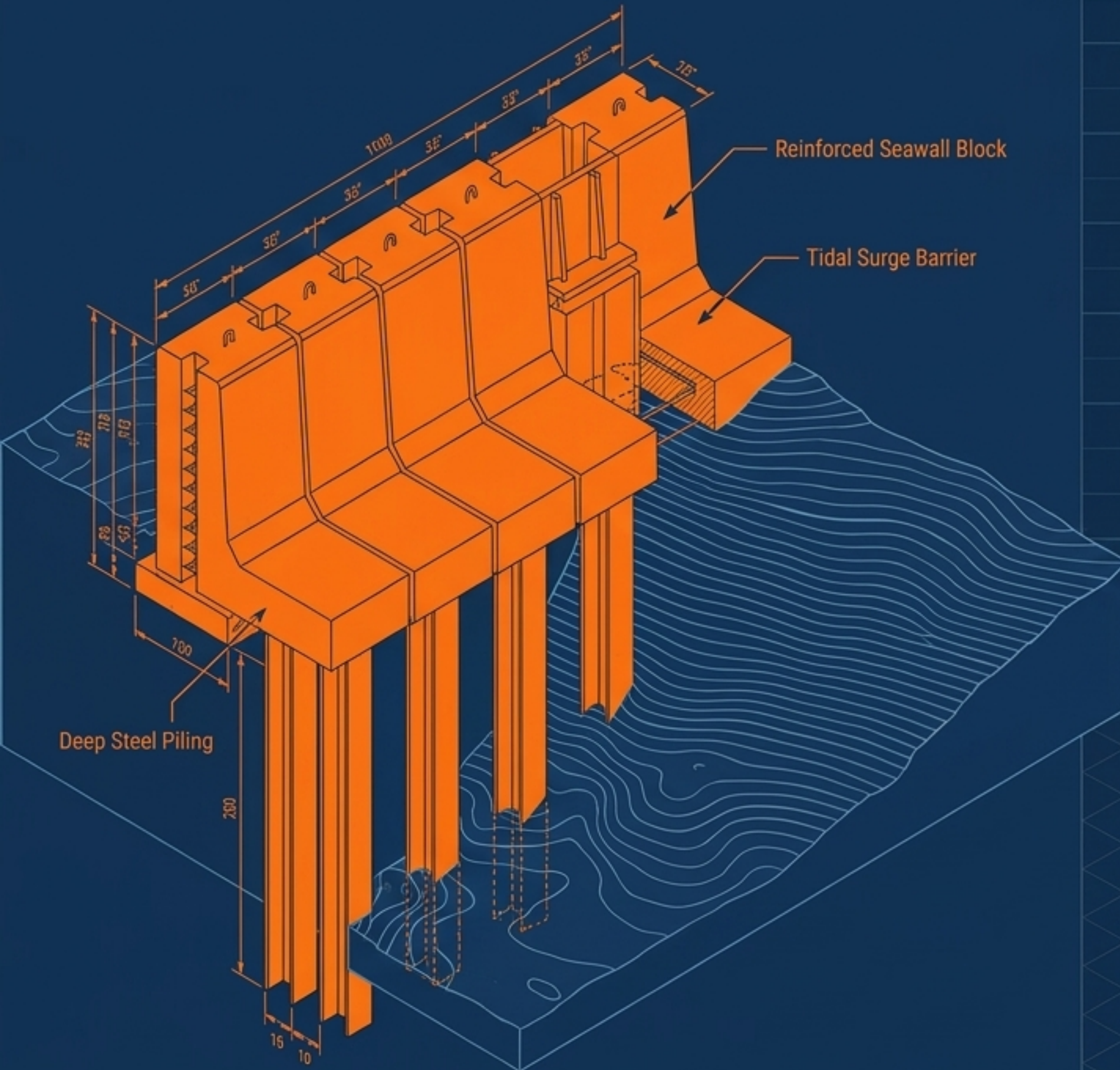
Long-term lifecycle management and system optimization.

Pillar II: Marine & Coastal Engineering

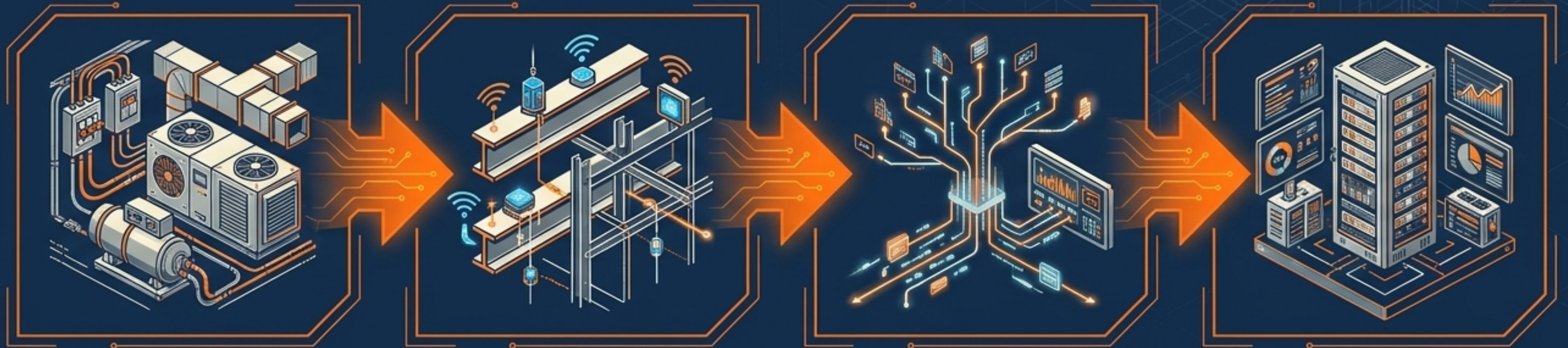
Core Focus: Specialized heavy infrastructure designed to withstand dynamic forces and protect coastal investments.

- Marine Engineering & Coastal Defense Systems.
- Dock, Pier, and Specialized Waterfront Construction.
- Environmental impact mitigation in coastal zones.

Value Add: Deep technical field experience navigating the unique logistical and environmental challenges of Caribbean marine projects.



Pillar III: Electrical, MEP & Smart Automation



Physical Installation:
Precision installation of HVAC and foundational electrical grids by Master Electricians.

Sensor Integration:
Embedding environmental sensors and digital nodes into the passive infrastructure.

Data Flow & Automation:
Real-time data routing to centralized smart panels.

Active Optimization:
Automated energy-efficiency controls dynamically adjusting to maximize comfort, safety, and operational savings.

Key Outcome: Transitioning static buildings into highly responsive, energy-efficient environments.

Pillar IV: Maintenance & Industrial Services

Core Focus: Protecting the infrastructure investment through proactive, engineered lifecycle management.





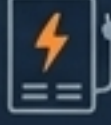





The Execution Engine: Modular Crew Deployment

We scale labor instantly without diluting quality. Every deployment is built on standardized, mathematically structured crew units led by qualified specialists.

Modular Crew Deployment Diagram

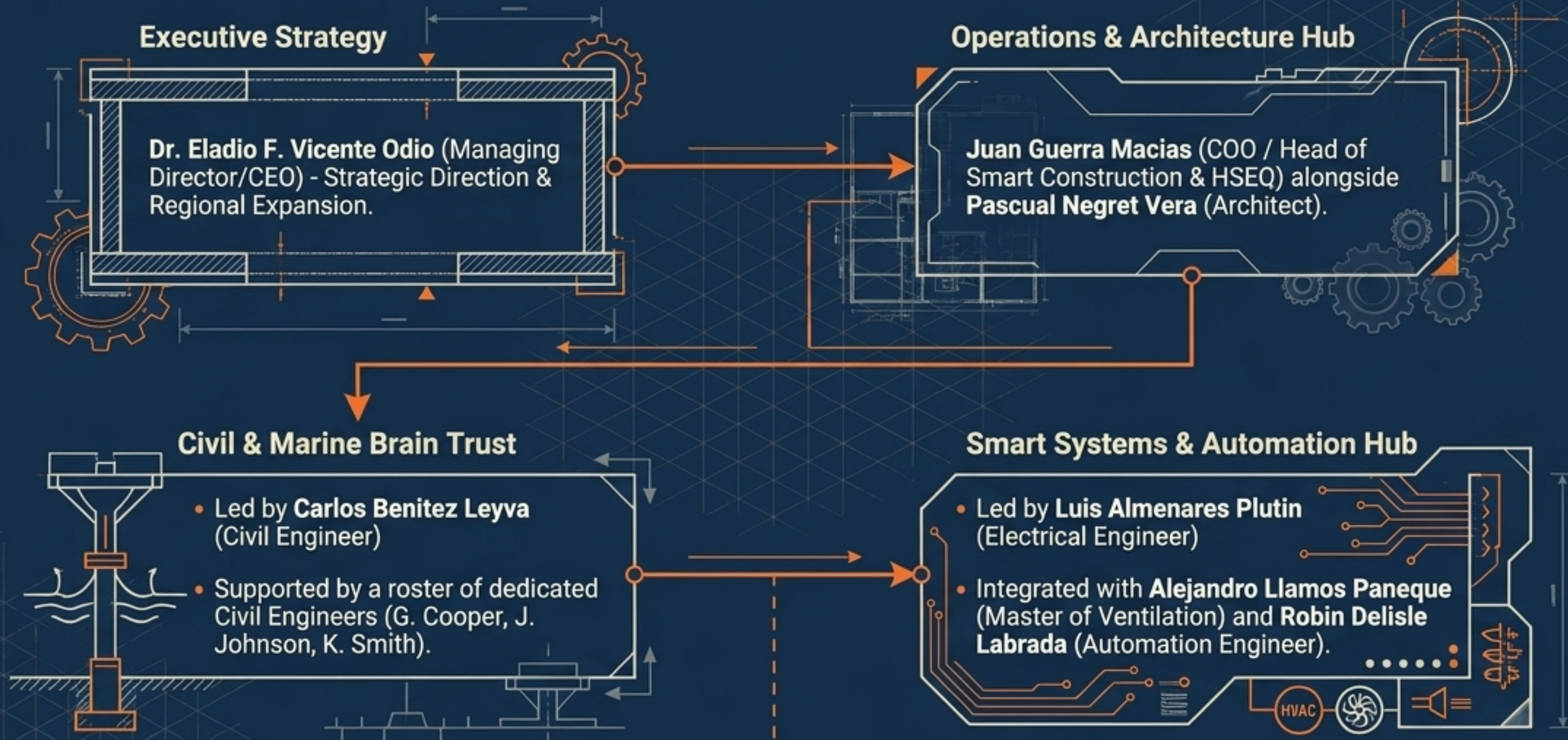


The Modular Matrix

Unit	Description	
	Masonry Unit: 1 Qualified Lead + 4 Assistants	
	Electrical Unit: 1 Qualified Lead + 2 Assistants	
	HVAC / Plumbing Units: 1 Qualified Lead + 2 Assistants	
	Welding Unit: 1 Qualified Lead + 1 Assistant	

Strategic Advantage: Enables seamless capacity expansion on massive sites while maintaining a rigid chain of accountability.

The Technical Leadership Matrix



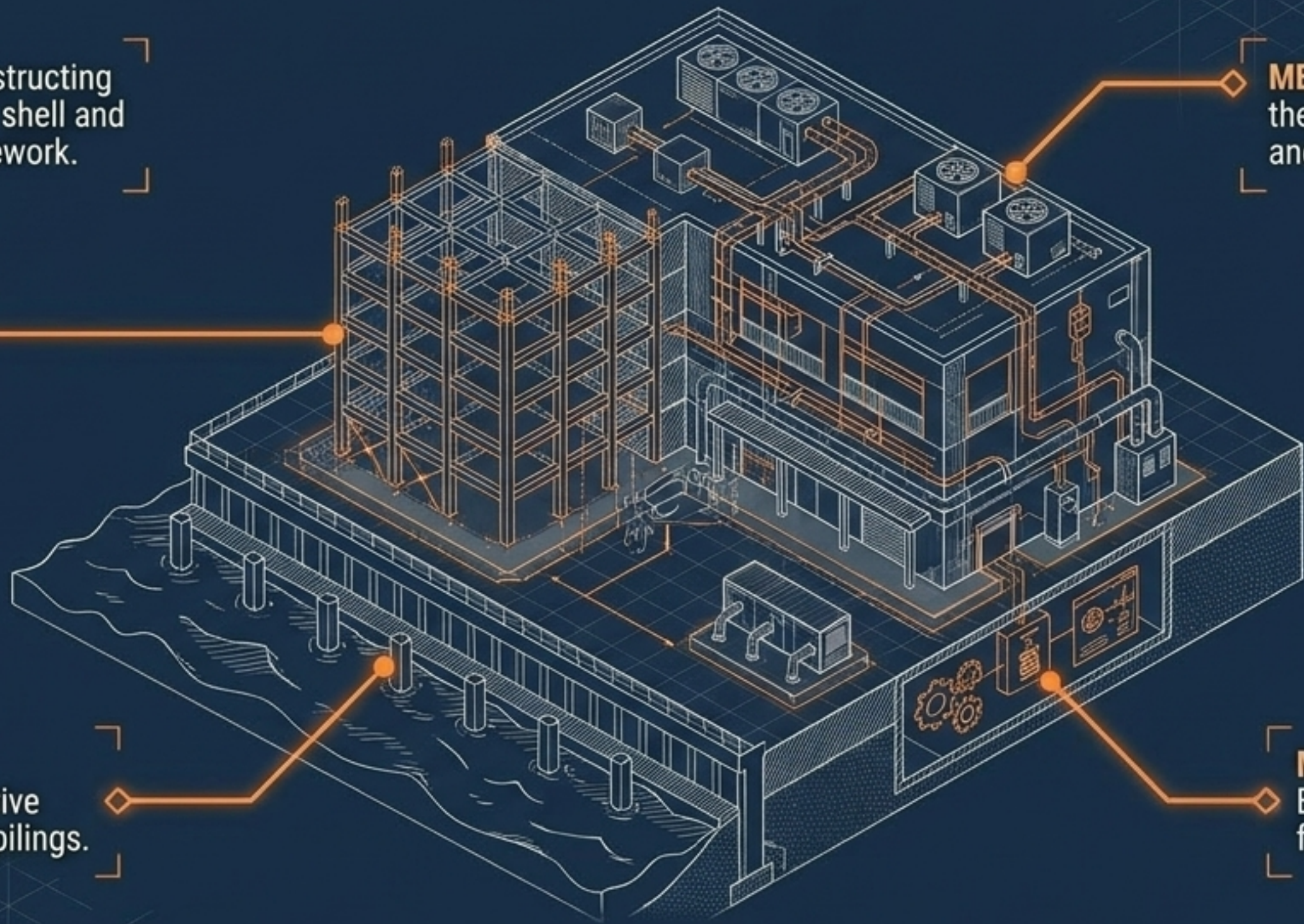
Corporate Governance: Robust oversight by dedicated CFOs (D. Patterson, D. Vassell) and Legal/Compliance Risk Directors (R. Lynch).



The Single-Source Execution Model

Building Division: Constructing the primary multi-story shell and precision interior framework.

MEP & Smart Systems: Wiring the integrated HVAC, power grids, and central automation panels.



Marine Division: Engineering the protective seawall and structural pilings.

Maintenance Hub: Establishing the long-term facility optimization protocols.

The Insight: Primary contractors only need one strategic partner to seamlessly execute and integrate the most complex phases of a major build, eliminating friction between specialized trades.

Corporate Readiness & Operational Compliance

Fully structured and legally compliant to partner on B2B, Government, and International Developer tenders.

Compliance Landmarks:

- 
- Active Registration with Companies Office of Jamaica (COJ).
 - Fully Compliant Financial Footprint (TRN, GCT, TCC Active, NIS).
 - Public Procurement Commission (PPC) & Advanced Insurances in active process.

The Workflow Standard:





Constructing the Future, Together.

By bridging traditional heavy infrastructure with next-generation smart systems, SSACOL delivers highly scalable, de-risked project execution for the Caribbean's most ambitious developments.

blueprint stamp

12 A Slipe Rd. Kingston 5, Jamaica
socialsmartconstruction@gmail.com
www.socialsmartconstruction.com